

LIST OF ABBREVIATIONS

ABS THERMOPLASTIC	SCW SOLID CORE WOOD
ACM ALUMINUM COMPOSITE PANEL	SIM SIMILAR
ADO AUTO DOOR OPERATOR	SSG STRUCTURAL SILICONE GLAZING
AFB ACOUSTIC FABRIC	SST STAINLESS STEEL
AFF ABOVE FINISHED FLOOR	STC SOUND TRANSMISSION CLASS
AFUE ANNUAL FUEL UTILIZATION EFFICIENCY	STI STEEL (INSULATED)
AL ALUMINUM	STL STEEL
ALD ALUMINUM DOOR	TMPD TEMPERED
AN BLACK ANODIZED ALUMINUM	T&G TONGUE & GROOVE
AP ACOUSTIC PANEL	TO TOP OF
ACT ACOUSTIC TILE	TS TRANSITION STRIP
B/O BOTTOM OF	TWF THROUGH-WALL FLASHING
B/W BETWEEN	TBD TO BE DETERMINED
CL CENTER LINE	TYP TYPICAL
CLG CEILING	U/S UNDER SIDE
CLR CLEAR	VAR VARIES
CONT. CONTINUOUS	VER VERTICAL
CP CARPET TILE	VIF VERIFY IN FIELD
C/W COMPLETE WITH	W/ WITH
DIA DIAMETER	WC WATER CLOSET
DIM DIMENSION	WD WOOD FINISH
DEM DEMOLITION	WV WOOD VENEER
DS DOWNSPOUTS	WWM WELDED WIRE MESH

ANNOTATION LEGEND

Ref ← REFERENCE - SIMILAR DETAIL

1 → INDICATES DETAIL NUMBER

ELEVATION & BUILDING SECTION VIEW TAG

1 → INDICATES DETAIL NUMBER

WALL SECTION VIEW TAG

1 → INDICATES DETAIL NUMBER

DETAIL CALLOUT

1 → INDICATES DETAIL NUMBER

SIM ← REFERENCE - SIMILAR DETAIL

1 → INDICATES DETAIL NUMBER

DETAIL CALLOUT

1 → INDICATES DETAIL NUMBER

1.70 → SPOT ELEVATION

Name Elevation → ELEVATION SYMBOL

D101 → DOOR TYPE

1 → INDICATES REVISION

NEW DOOR

EXISTING DOOR TO REMAIN

GENERAL NOTES

- THESE DRAWINGS SHALL BE READ IN CONJUNCTION WITH ALL APPLICABLE ARCHITECTURAL, STRUCTURAL, CIVIL, LANDSCAPE, MECHANICAL AND ELECTRICAL DRAWINGS AND SPECIFICATIONS. REPORT ANY DISCREPANCIES, OMISSIONS, OR INTERFERENCES TO THE CONSULTANT PRIOR TO PROCEEDING WITH THE WORK.
- DO NOT SCALE DRAWINGS. WRITTEN DIMENSIONS TAKE PRECEDENCE. ALL DIMENSIONS, GRADES, ELEVATIONS, EXISTING CONDITIONS, AND SITE MEASUREMENTS SHALL BE FIELD VERIFIED BY THE CONTRACTOR PRIOR TO COMMENCEMENT OF WORK.
- THESE DRAWINGS ARE COPYRIGHTED AND SHALL NOT BE REPRODUCED, REUSED, OR ALTERED WITHOUT WRITTEN AUTHORIZATION OF THE CONSULTANT.
- THE CONTRACTOR SHALL VISIT THE SITE AND FAMILIARIZE THEMSELVES WITH ALL EXISTING CONDITIONS AFFECTING THE WORK, INCLUDING BUT NOT LIMITED TO EXISTING FINISHED GRADES, DOOR THRESHOLDS, LANDINGS, ADJACENT WALKS, FOUNDATION CONDITIONS, EXISTING RAMP SUPPORTS, SONOTUBES, CONCRETE STAIRS, RAILINGS, AND ALL ITEMS TO REMAIN.
- THE CONTRACTOR SHALL VERIFY THE EXACT LOCATION, EXTENT, SIZE, DEPTH AND CONDITION OF ALL EXISTING ELEMENTS TO BE DEMOLISHED OR TIED INTO. DRAWINGS OF EXISTING CONDITIONS ARE PROVIDED FOR GENERAL INFORMATION ONLY AND ARE NOT TO BE RELIED UPON WITHOUT FIELD VERIFICATION.
- ALL WORK SHALL COMPLY WITH THE CURRENT ONTARIO BUILDING CODE, ACCESSIBILITY REQUIREMENTS INDICATED ON THE DRAWINGS, THE OCCUPATIONAL HEALTH AND SAFETY ACT AND REGULATIONS, AND ALL REQUIREMENTS OF AUTHORITIES HAVING JURISDICTION.
- THE CONTRACTOR SHALL BE SOLELY RESPONSIBLE FOR CONSTRUCTION MEANS, METHODS, TECHNIQUES, SEQUENCING, TEMPORARY BRACING, SHORING, HOARDING, BARRICADES, PUBLIC PROTECTION, SITE SAFETY, AND MAINTENANCE OF SAFE ACCESS TO THE BUILDING AND SITE AT ALL TIMES DURING CONSTRUCTION.
- PRIOR TO ANY EXCAVATION, SAWCUTTING, REMOVAL OF SONOTUBES, FOOTINGS OR OTHER BELOW-GRADE WORK, THE CONTRACTOR SHALL OBTAIN ALL REQUIRED PUBLIC AND PRIVATE UTILITY LOCATES AND SHALL PROTECT ALL EXISTING SERVICES TO REMAIN. ANY DAMAGE TO EXISTING SERVICES SHALL BE MADE GOOD BY THE CONTRACTOR AT NO ADDITIONAL COST TO THE OWNER.
- THE CONTRACTOR SHALL CONFIRM THAT ANY SERVICES AFFECTED BY THE WORK HAVE BEEN PROPERLY IDENTIFIED, DISCONNECTED, CAPPED, SUPPORTED, OR RELOCATED AS REQUIRED BEFORE COMMENCING DEMOLITION. COORDINATE WITH ALL TRADES AND WITH THE OWNER AS REQUIRED.
- DEMOLITION SHALL INCLUDE COMPLETE REMOVAL AND LEGAL DISPOSAL OF THE EXISTING WOOD RAMP, ASSOCIATED SUPPORTS, POSTS, RAILINGS, SONOTUBES / FOOTINGS, CONCRETE STAIRS, AND ALL ANCILLARY MATERIALS, FASTENERS, APPURTENANCES, AND BELOW-GRADE REMNANTS AS REQUIRED TO COMPLETE THE NEW WORK, WHETHER OR NOT EVERY COMPONENT IS SPECIFICALLY IDENTIFIED ON THE DRAWINGS.
- EXERCISE CARE DURING DEMOLITION SO AS NOT TO DAMAGE ADJACENT STRUCTURES, FOUNDATIONS, SLABS, DOORS, WALLS, FINISHES, LANDSCAPING, PAVING, WATERPROOFING, OR SERVICES TO REMAIN. ANY DAMAGE CAUSED BY THE CONTRACTOR SHALL BE REPAIRED OR REPLACED TO MATCH EXISTING CONDITIONS TO THE SATISFACTION OF THE CONSULTANT.
- IF UNFORESEEN CONDITIONS ARE ENCOUNTERED, INCLUDING BUT NOT LIMITED TO UNDOCUMENTED FOUNDATIONS, DIFFERING FOOTING DEPTHS, UNSUITABLE SUBGRADE, BURIED SERVICES, STRUCTURAL DEFICIENCIES, HAZARDOUS MATERIALS, OR CONDITIONS THAT MAY AFFECT THE DESIGN INTENT OR SAFE EXECUTION OF THE WORK, STOP WORK IN THE AFFECTED AREA AND NOTIFY THE CONSULTANT IMMEDIATELY. DO NOT PROCEED UNTIL WRITTEN DIRECTION HAS BEEN RECEIVED.
- PROTECT ALL EXISTING ITEMS TO REMAIN FROM DUST, IMPACT, WATER, DEBRIS, VIBRATION, AND WEATHER DURING CONSTRUCTION. PROVIDE TEMPORARY WEATHERPROTECTION, BARRIERS, EDGE PROTECTION, AND SAFE EGRESS AS REQUIRED.
- PATCH REPAIR AND MAKE GOOD ALL AREAS DISTURBED BY DEMOLITION AND NEW CONSTRUCTION, INCLUDING BUT NOT LIMITED TO WALKS, PAVING, SLABS, WALLS, DOOR THRESHOLDS, FINISHES, TOPSOIL, GRASS, AND SITE GRADES. ALL PATCHING AND REPAIRS SHALL MATCH EXISTING ADJACENT MATERIALS, FINISHES, LINES, AND ELEVATIONS UNLESS NOTED OTHERWISE.
- NEW CONCRETE RAMP, LANDINGS, CURBS, HANDRAILS, GUARDS, EDGE PROTECTION, STAIRS, TACTILE / CONTRAST ELEMENTS IF APPLICABLE, AND ALL RELATED WORK SHALL BE CONSTRUCTED AS DETAILED AND SHALL COMPLY WITH APPLICABLE OBC ACCESSIBILITY REQUIREMENTS AND, WHERE APPLICABLE TO EXTERIOR PUBLIC PATHS OF TRAVEL, ADA OF PUBLIC SPACES REQUIREMENTS.
- ALL DIMENSIONS FOR THE NEW RAMP SHALL BE TO FINISHED SURFACES. CONTRACTOR SHALL COORDINATE FINAL RAMP ELEVATIONS, LANDINGS, SLOPES, THRESHOLD CONDITIONS, AND TIE-INS TO EXISTING CONSTRUCTION TO ENSURE A SMOOTH, SAFE, AND ACCESSIBLE TRANSITION WITHOUT ABRUPT LEVEL CHANGES OR WATER PONDING.
- EXTERIOR CONCRETE SURFACES SHALL BE FORMED TRUE, LEVEL, AND TO LINE, AND SHALL RECEIVE A SLIP-RESISTANT BROOM FINISH UNLESS NOTED OTHERWISE. SLOPE HORIZONTAL SURFACES TO DRAIN AWAY FROM THE BUILDING AND DO NOT CREATE BIRD BATHS OR LOW SPOTS.
- PROVIDE CONTROL JOINTS, EXPANSION JOINTS, REINFORCEMENT, DOWELS, ANCHORAGE, BASE PLATES, AND CONNECTIONS AS DETAILED. WHERE NOT FULLY DETAILED IN THE CONTRACT DOCUMENTS, SUBMIT PROPOSED DETAILS AND / OR SHOP DRAWINGS FOR REVIEW PRIOR TO FABRICATION OR INSTALLATION. SUBMIT SHOP DRAWINGS FOR ALL METAL HANDRAILS, GUARDS, CONNECTIONS, ANCHORS, EMBEDS, FINISHES, AND ANY DELEGATED COMPONENTS. WHERE STRUCTURAL DESIGN OF RAILINGS, ANCHORAGE, OR SUPPORTING ELEMENTS IS DELEGATED, SHOP DRAWINGS AND DESIGN SHALL BE PREPARED AND SEALED BY A PROFESSIONAL ENGINEER LICENSED IN THE PROVINCE OF ONTARIO.
- REVIEW OF SHOP DRAWINGS BY THE CONSULTANT IS FOR GENERAL CONFORMANCE WITH THE DESIGN INTENT ONLY AND SHALL NOT RELIEVE THE CONTRACTOR OF RESPONSIBILITY FOR DIMENSIONS, QUANTITIES, FABRICATION, INSTALLATION METHODS, SITE MEASUREMENTS, SAFETY PRECAUTIONS, OR COORDINATION WITH THE WORK OF OTHER TRADES.
- THE CONTRACTOR SHALL MAINTAIN THE SITE IN A CLEAN AND SAFE CONDITION AT ALL TIMES. REMOVE DEBRIS REGULARLY AND LEGALLY DISPOSE OF ALL DEMOLISHED MATERIALS.
- CONTRACTOR SHALL FIELD VERIFY EXISTING WALL THICKNESS, OPENING SIZE, STRUCTURAL CONDITIONS, THRESHOLD ELEVATIONS, FINISH EXTENTS, AND ALL DIMENSIONS PRIOR TO ORDERING NEW DOOR / FRAME.
- WHERE NEW DOOR / FRAME IS LARGER THAN EXISTING, CONTRACTOR SHALL BE RESPONSIBLE FOR ALL CUTTING, OPENING ENLARGEMENT, INFILL, FRAMING, ANCHORAGE, PATCHING, REPAIRING, REFINISHING, AND MAKE-GOOD WORK REQUIRED TO RECEIVE THE NEW ASSEMBLY.
- PATCH REPAIR AND MATCH ALL DISTURBED INTERIOR / EXTERIOR WALLS, FLOOR FINISHES, THRESHOLDS, CONCRETE, FLASHINGS, SEALANTS, INSULATION, AND ADJACENT SURFACES TO MATCH EXISTING CONDITIONS.
- PROVIDE NEW DOOR, FRAME, THRESHOLD, HARDWARE, WEATHERSTRIPPING, SEALANTS, AND ALL ACCESSORIES COMPLETE FOR A WEATHER-TIGHT, SECURE, AND FULLY OPERABLE INSTALLATION.
- WHERE THIS ENTRANCE FORMS PART OF A REQUIRED BARRIER-FREE PATH OF TRAVEL, COMPLETE INSTALLATION SHALL COMPLY WITH CURRENT OBC ACCESSIBILITY REQUIREMENTS, INCLUDING REQUIRED CLEAR OPENING, THRESHOLD, HARDWARE, MANEUVERING CLEARANCES, AND POWER DOOR OPERATOR REQUIREMENTS, WHERE APPLICABLE.

REINFORCING STEEL:

- WIRE MESH SHALL CONFORM TO ASTM A1064 AND HAVE A YIELD STRENGTH OF 400 MPA.
- MINIMUM CONCRETE COVER FOR REINFORCING STEEL SHALL BE 2" U.N.O. (TYPICAL) AND 3" WHEN IN CONTACT WITH SOIL.
- LAP & ANCHOR SPLICES SHALL CONFORM TO CSA A23.3.
- CONTRACTOR TO PROVIDE THE NECESSARY MEANS TO SUPPORT AND KEEP STEEL REINFORCEMENT IN THE INDICATED POSITIONS DURING WORKING OPERATIONS AND POURING CONCRETE.
- ALL PRINCIPLE REINFORCING STEEL TO BE REVIEWED IN PLACE BY ENGINEER'S REPRESENTATIVE BEFORE CONCRETE IS POURED. THE CONTRACTOR SHALL CONTACT THE ENGINEER 24 HOURS PRIOR TO POURING TO ENABLE SITE REVIEW BE UNDERTAKEN. THE CONTRACTOR SHALL MAKE AVAILABLE THE MILL CERTIFICATION FOR ALL REINFORCING STEEL.

DESIGN DATA

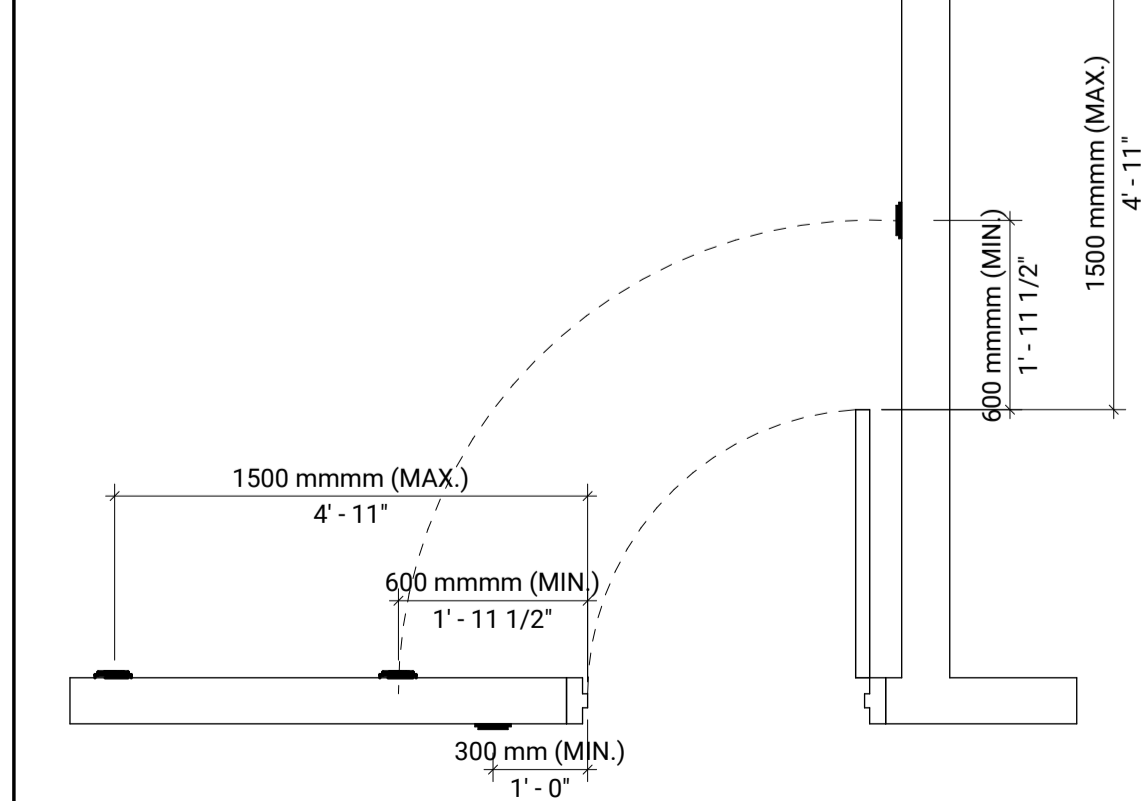
LOADING	
LIVE LOAD	4.8 kPa
DEAD LOAD	N/A
CLIMATIC DATA	
HOURLY WIND PRESSURE (1/50)	0.44 kPa
SNOW LOAD	S _s 2.2 kPa
	S _r 0.4 kPa
SEISMIC DATA	
SITE CLASSIFICATION	C
S _s (0.2)	0.259
S _s (0.5)	0.157
S _s (1.0)	0.086
S _s (2.0)	0.043
PGA	0.164

DOOR SCHEDULE

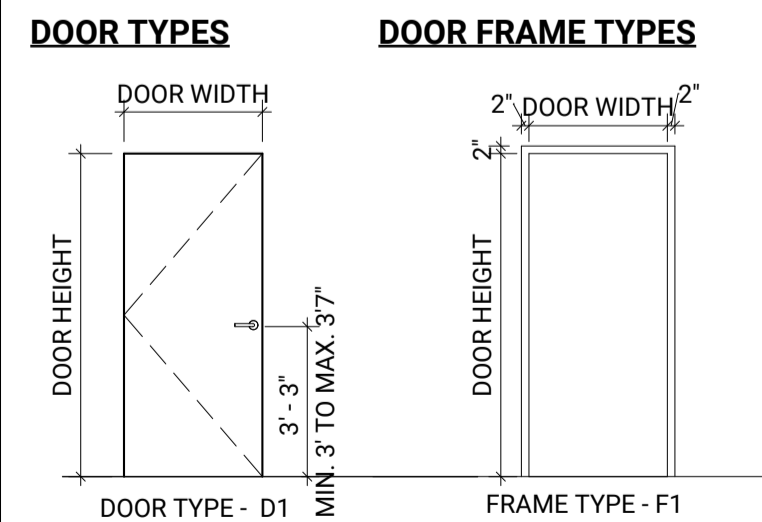
DOOR NO.	DOOR WIDTH	DOOR HEIGHT	DOOR TYPE	DOOR MATERIAL	DOOR FINISH	FRAME TYPE	FRAME MATERIAL	FRAME FINISH	GLAZING	FIRE RATING	HARDWARE GROUP	NOTES
D101	3'-2"	7'-0"	D1	HMI	PT	F1	HM	PT	-	-	HG#1	THRESHOLD NOT TO BE HIGHER THAN 13mm

POWER DOOR OPERATOR LOCATION:

- PUSH BUTTON CENTERLINE 900mm-1100mm AFF.
- LOCATED MIN 600 - MAX 1500mm BEYOND EDGE OF DOOR
- OPENING IF DOOR SWINGS TOWARD APPROACH SIDE

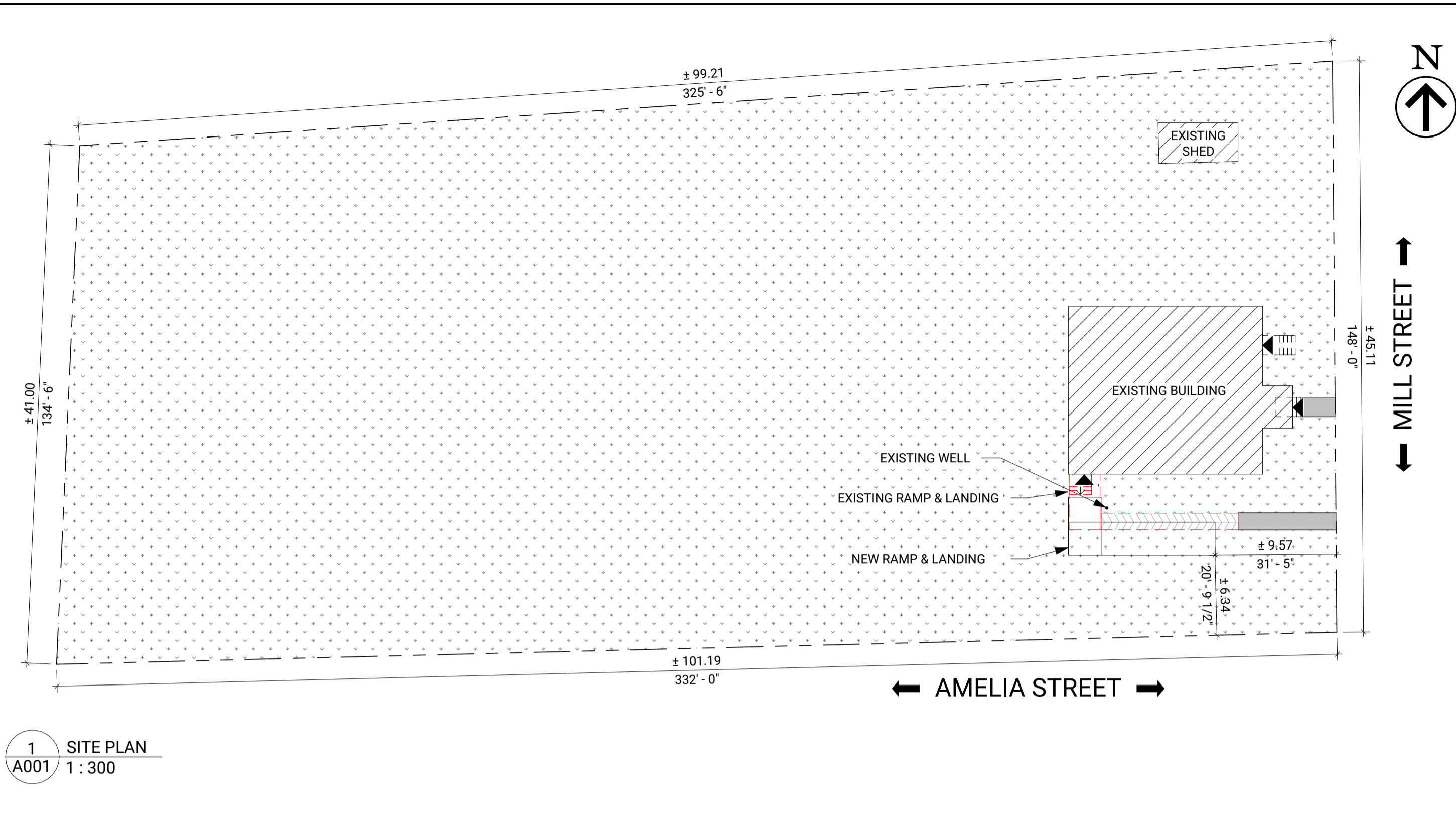


DOOR LEGEND



DOOR HARDWARE SCHEDULE

- HG#1 - B.F. DOOR**
- 3 HEAVY DUTY BUTT HINGES
 - 1 LEVER LOCKSET (ENTRANCE FUNCTION)
 - 1 FULL WIDTH PANIC BAR
 - 1 ELECTRIC STRIKE
 - 1 AUTOMATIC DOOR OPERATOR W/ CLOSER FUNCTION
 - 2 SQUARE PUSH BUTTON
 - 1 ALUMINUM THRESHOLD
 - 1 WEATHER STRIPPING
 - 1 DOOR SWEEP



1 SITE PLAN
A001 1:300

USE AND INTERPRETATION OF DRAWINGS:

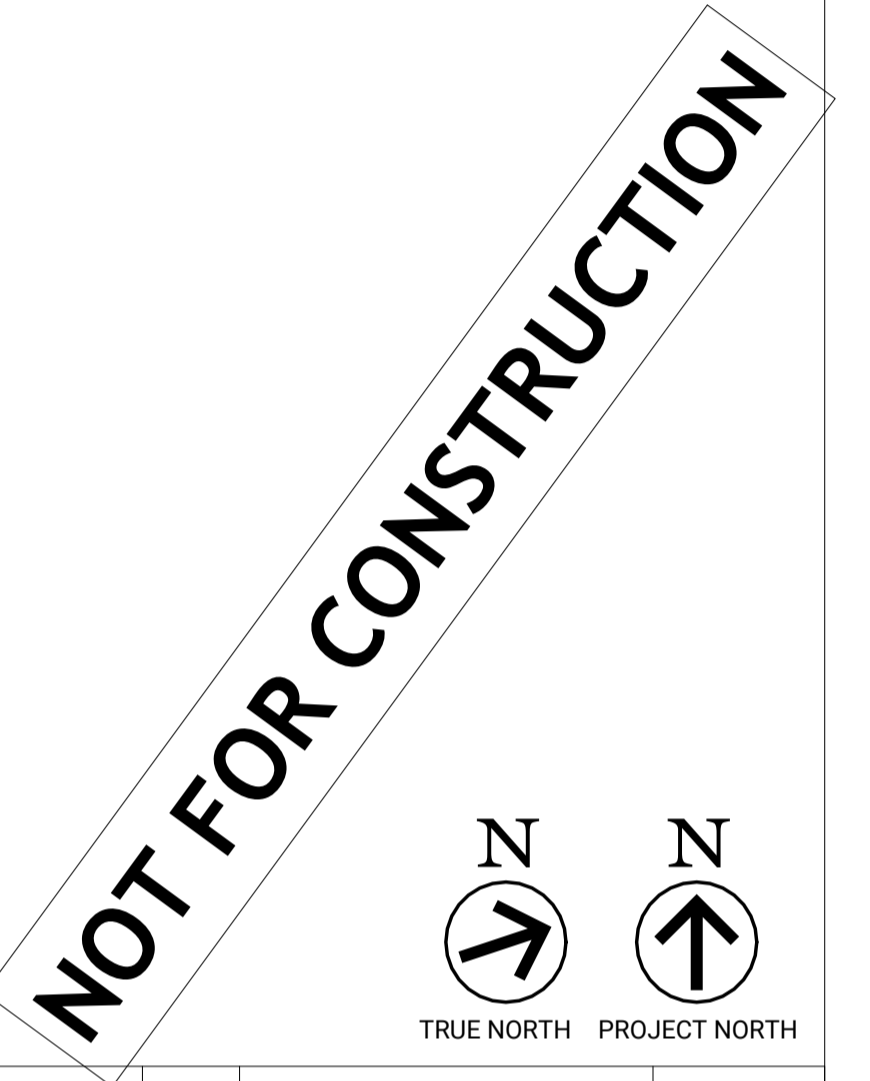
DRAWINGS ARE NOT TO BE SCALED.

UNAUTHORIZED CHANGES:

THIS DRAWING AND DESIGN IS COPYRIGHT PROTECTED WHICH SHALL NOT BE USED, REPRODUCED OR REVISED WITHOUT WRITTEN PERMISSION BY EFI.
THE CONTRACTOR SHALL CHECK AND VERIFY ALL DIMENSIONS. REPORT ALL ERRORS AND OMISSIONS PRIOR TO COMMENCING WORK.

SITE PLAN LEGEND:

- PROPERTY LINE
- ▲ ENTRANCE/ EXIT LOCATION
- ▨ EXISTING BUILDING
- ▨ EX. RAMP
- ▨ EX. SOFT LANDSCAPE
- ▨ EX. CONCRETE SIDEWALK



DATE	NO.	DESCRIPTION	ISSUED BY
2026-03-25	A	ISSUED FOR CLIENT REVIEW	KT

DRAWN BY:	INITIALS:	YYYY/MM/DD
KT	KT	2026/03/24
DESIGNED BY:	DM	2026/03/24
DRAWING CHECKED BY:	DM	2026/03/24
QC BY:	DM	2026/03/24
PM:	RS	2026/03/24

SEAL(S):

UNAUTHORIZED USE OF DATA DISCLOSURE OF TECHNICAL INFORMATION CONTAINED HEREIN OR REPRODUCTION OF THIS DOCUMENT IN WHOLE OR IN PART FOR USE BY THIRD PARTIES IS PROHIBITED WITHOUT PRIOR WRITTEN PERMISSION FROM EFI ENGINEERING INC.

EFI ENGINEERING
T: (613) 936-0148
engineer@efiengineering.com
www.efiengineering.com

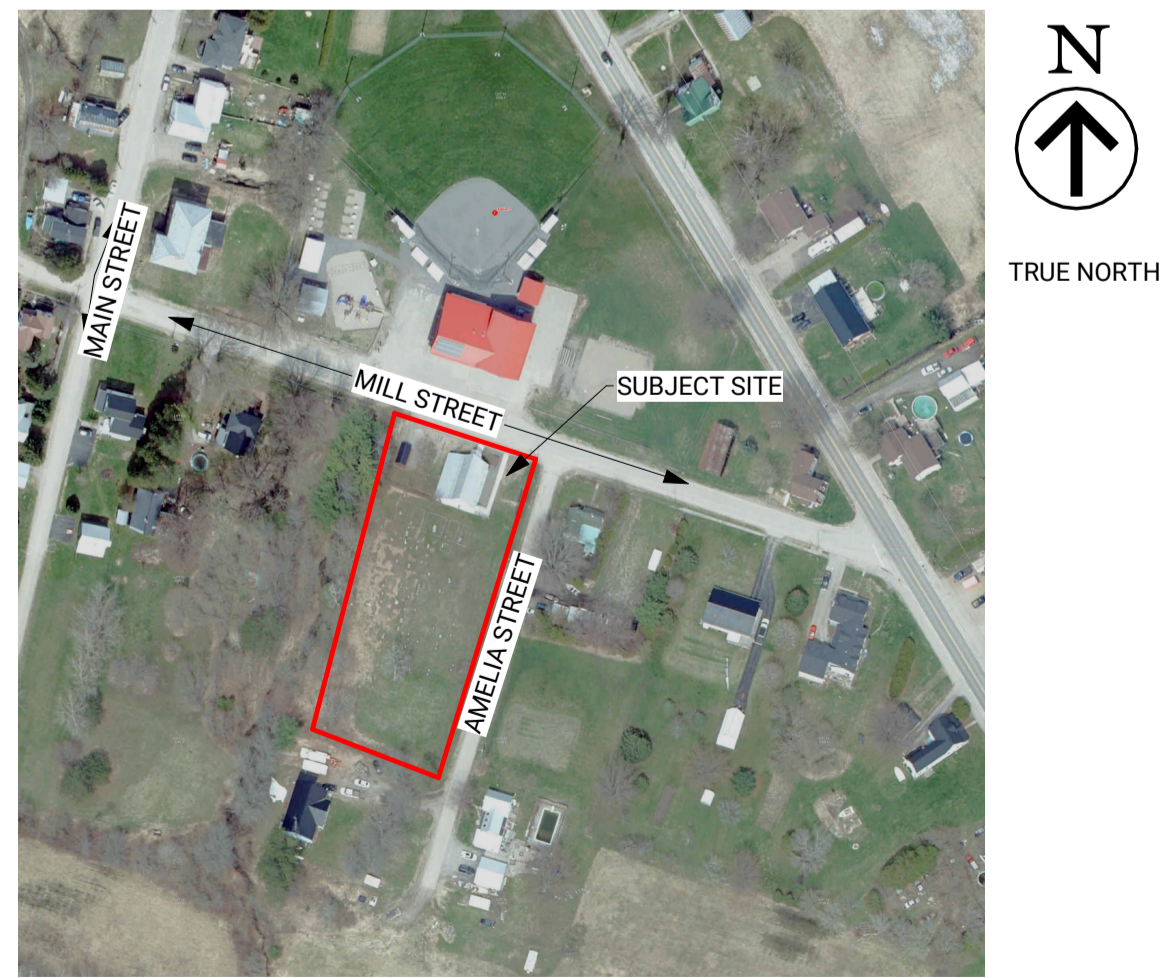
CLIENT: AUGUSTA TOWNSHIP
3560 COUNTY RD, PRESCOTT, ON, K0E 1T0

SITE: NORTH AUGUSTA COMMUNITY HALL
8115 MILL STREET, NORTH AUGUSTA, ON

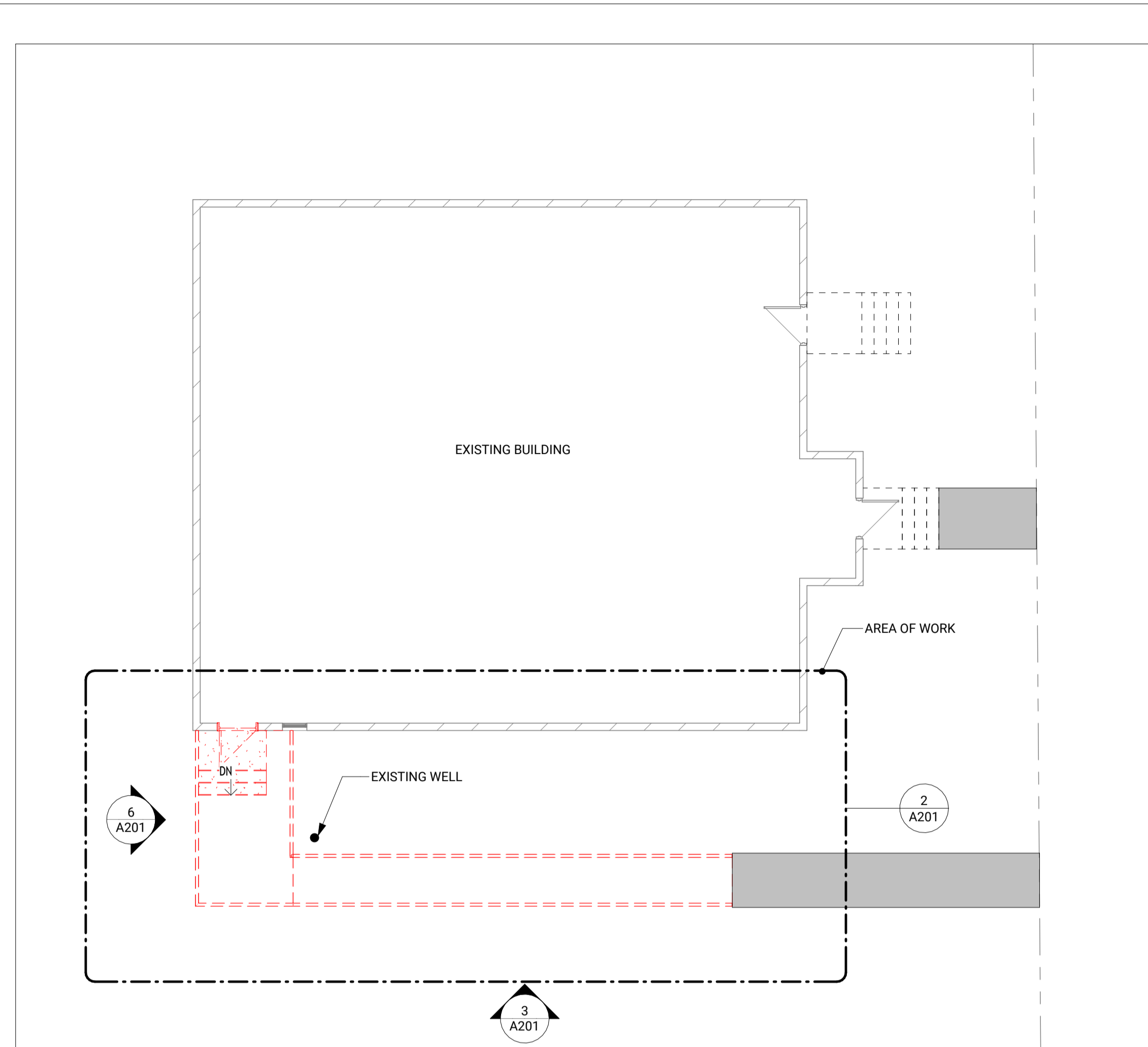
TITLE: GENERAL INFORMATION

SCALE: As indicated DATE: 2026/03/24

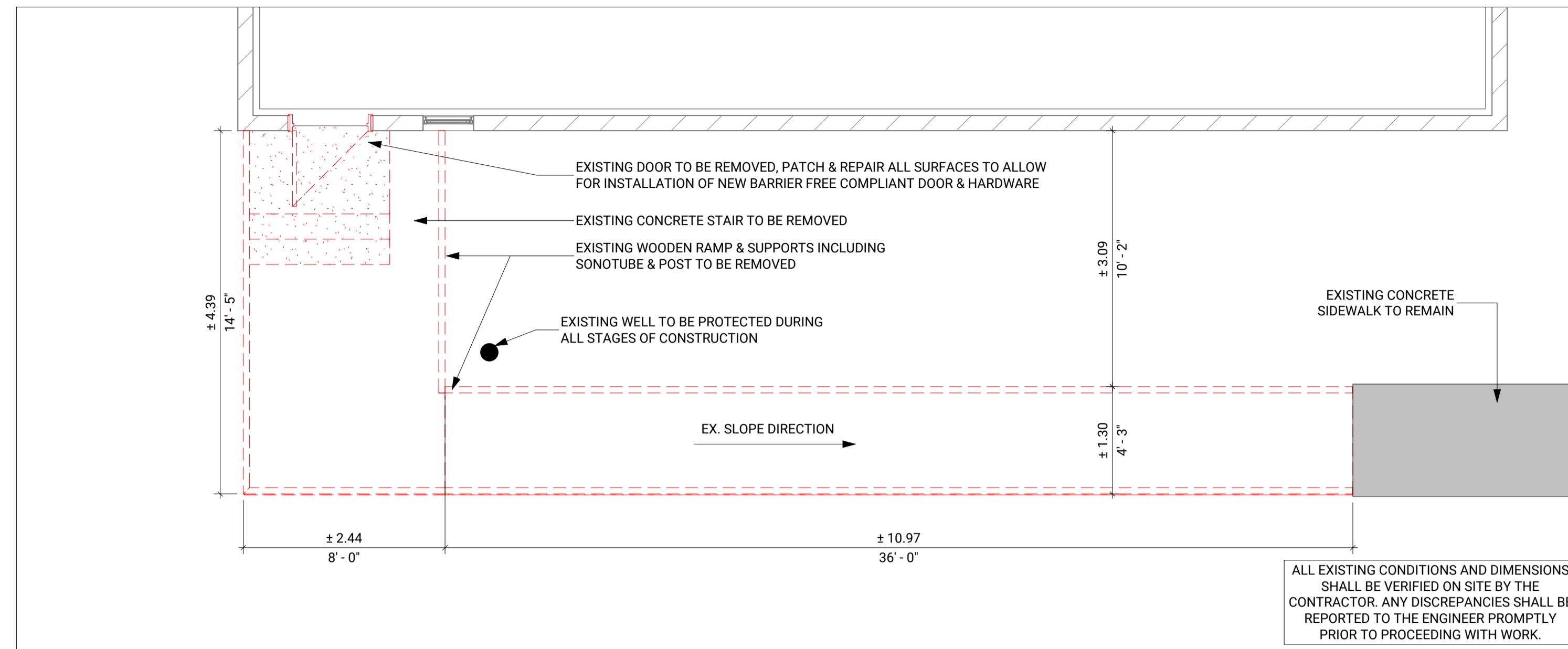
PROJECT NO: 8369 DRAWING NO: A001 REVISION: A



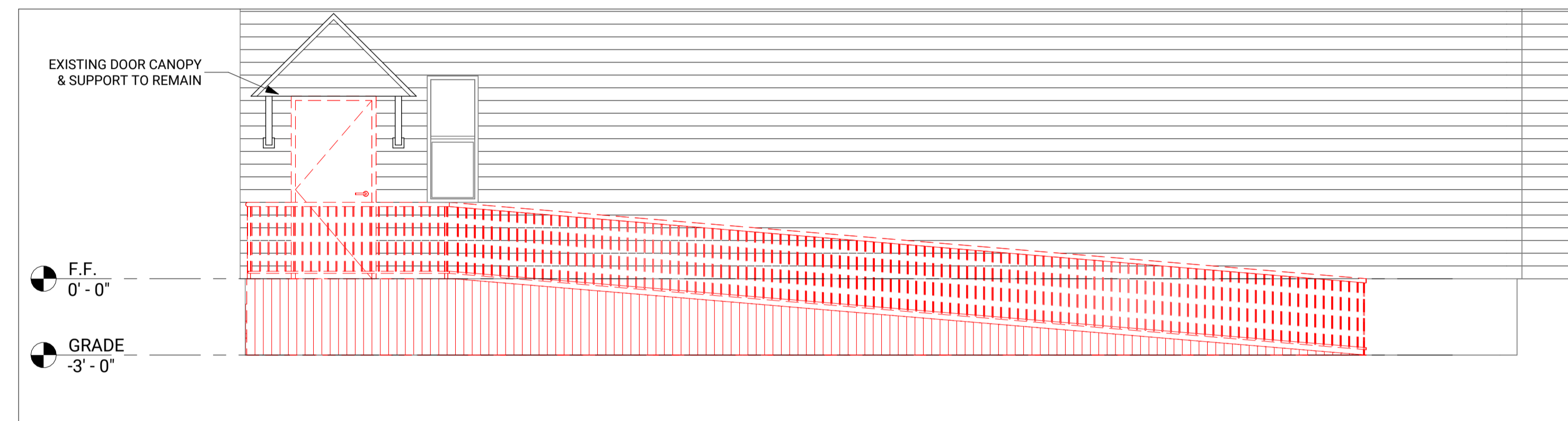
KEY PLAN
N.T.S



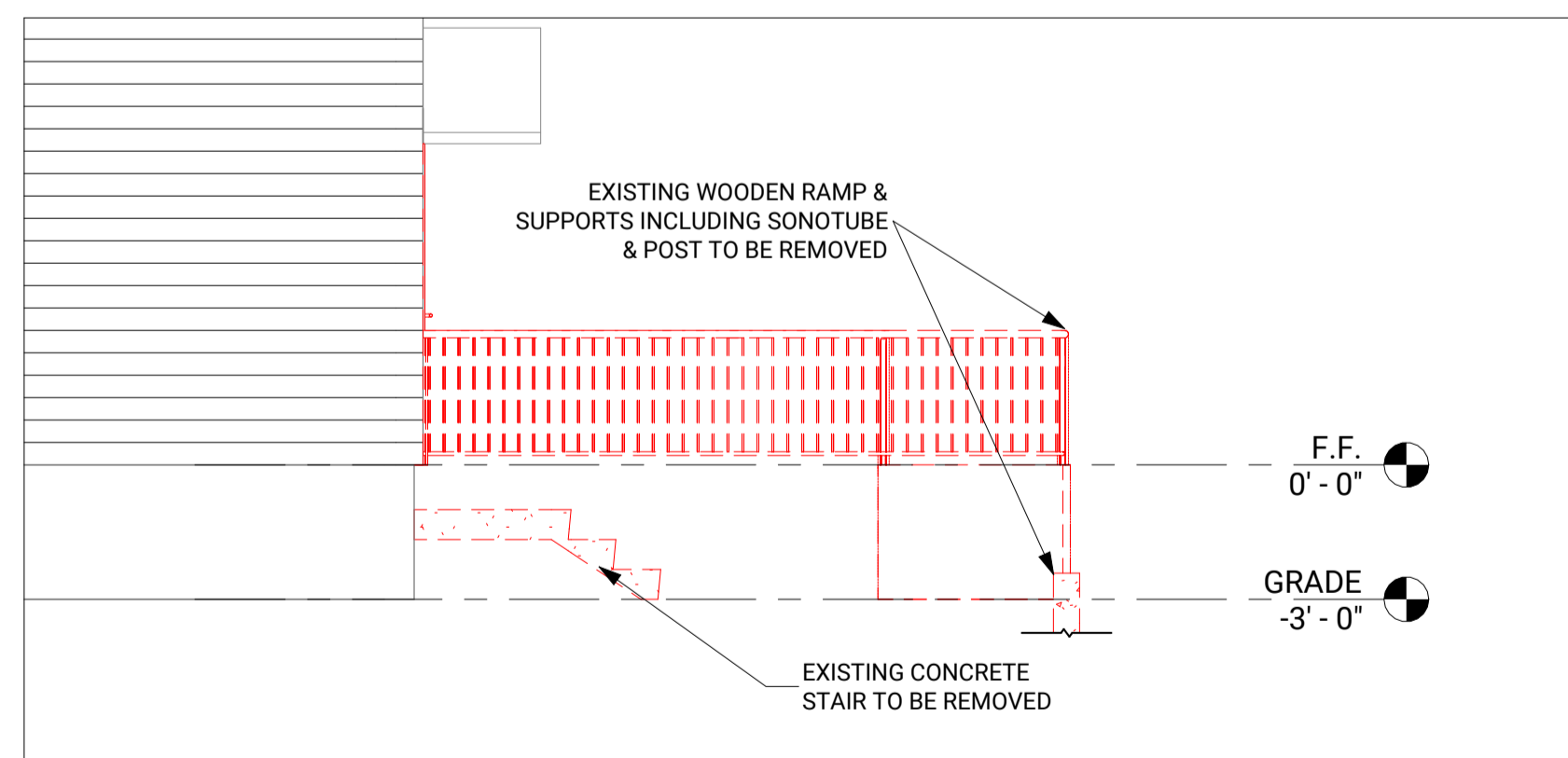
1 DEMOLITION - KEY PLAN
A201 1/8" = 1'-0"



2 DEMOLITION PLAN VIEW
A201 1/4" = 1'-0"



3 DEMOLITION - SOUTH ELEVATION
A201 1/4" = 1'-0"



6 DEMOLITION - WEST ELEVATION
A201 1/4" = 1'-0"

LEGEND

	EXISTING TO REMAIN
	DEMOLITION

USE AND INTERPRETATION OF DRAWINGS:
DRAWINGS ARE NOT TO BE SCALED.
UNAUTHORIZED CHANGES:
THIS DRAWING AND DESIGN IS COPYRIGHT PROTECTED WHICH SHALL NOT BE USED, REPRODUCED OR REVISED WITHOUT WRITTEN PERMISSION BY EFI.
THE CONTRACTOR SHALL CHECK AND VERIFY ALL DIMENSIONS. REPORT ALL ERRORS AND OMISSIONS PRIOR TO COMMENCING WORK.

NOT FOR CONSTRUCTION

DATE	NO.	DESCRIPTION	ISSUED BY
2026-03-25	A	ISSUED FOR CLIENT REVIEW	KT

	INITIALS:	YYYY/MM/DD
DRAWN BY:	KT	2026/03/24
DESIGNED BY:	KT	2026/03/24
DRAWING CHECKED BY:	DM	2026/03/24
QC BY:	DM	2026/03/24
PM:	RS	2026/03/24

SEAL(S):

UNAUTHORIZED USE OF DATA DISCLOSURE OF TECHNICAL INFORMATION CONTAINED HEREIN OR REPRODUCTION OF THIS DOCUMENT IN WHOLE OR IN PART FOR USE BY THIRD PARTIES IS PROHIBITED WITHOUT PRIOR WRITTEN PERMISSION FROM EFI ENGINEERING INC.

EFI ENGINEERING
T: (613) 936-0148
engineer@efiengineering.com
www.efiengineering.com

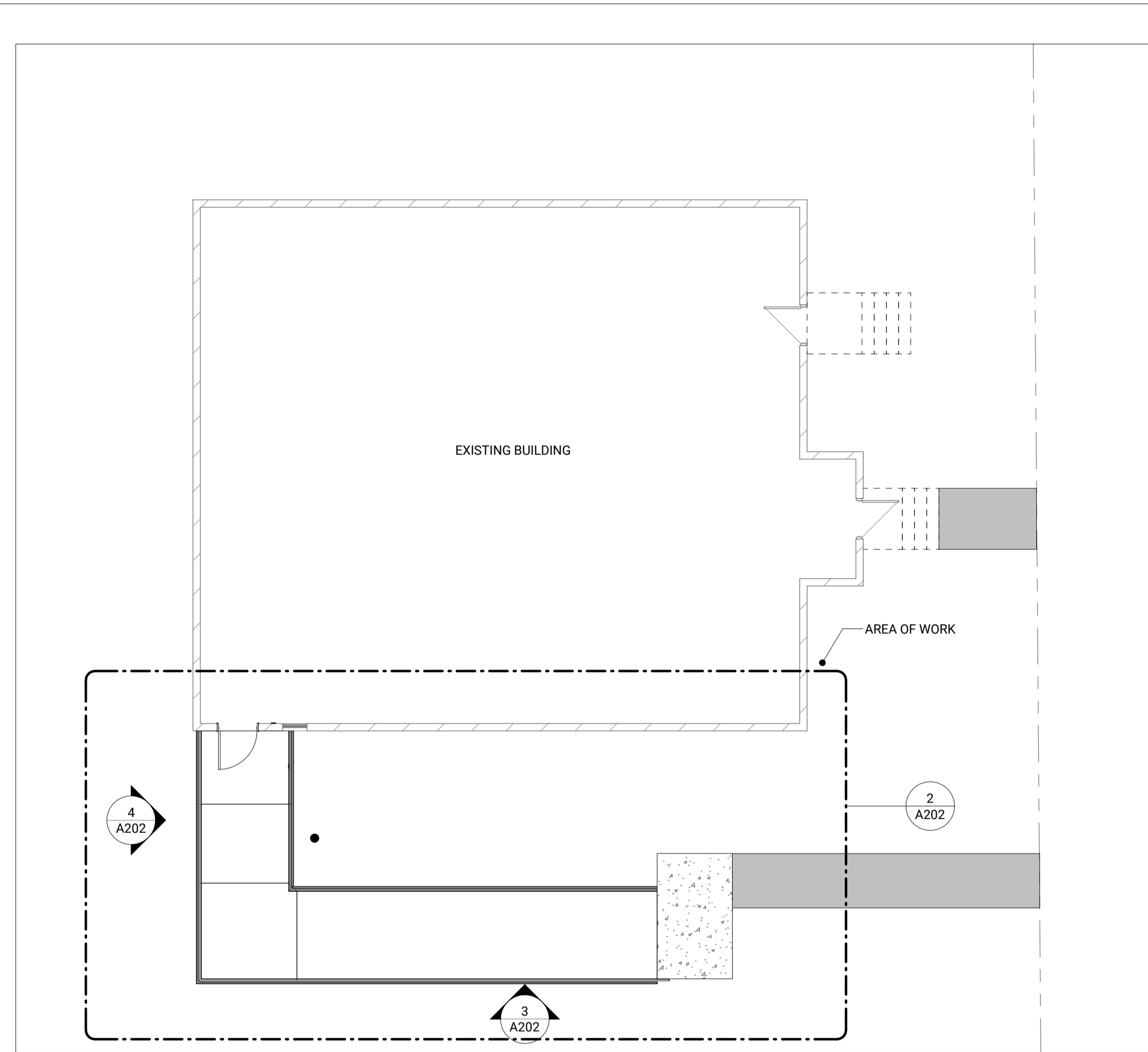
CLIENT: AUGUSTA TOWNSHIP
3560 COUNTY RD, PRESCOTT, ON, K0E 1T0

SITE: NORTH AUGUSTA COMMUNITY HALL
8115 MILL STREET, NORTH AUGUSTA, ON

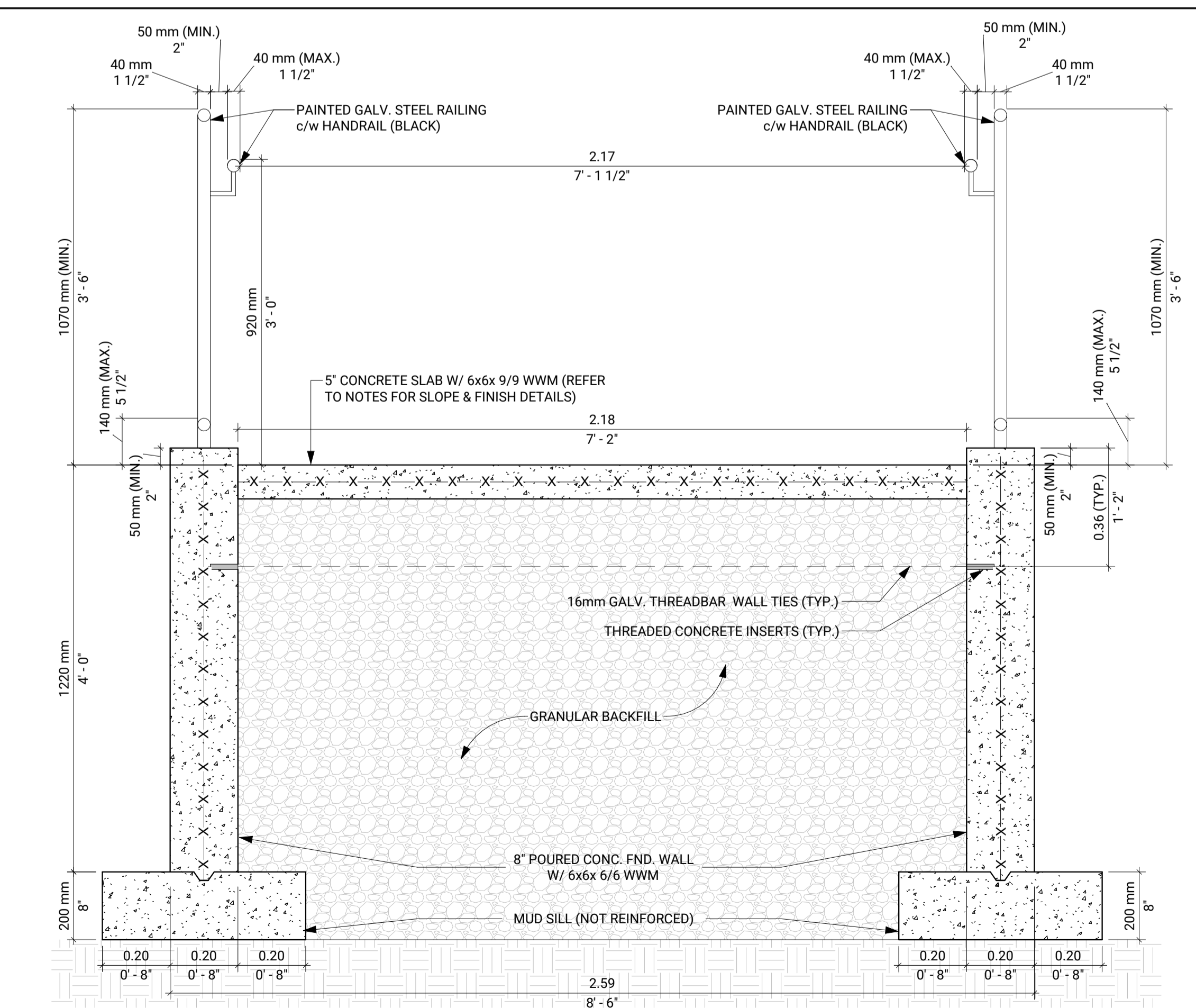
TITLE: DEMOLITION DETAILS

SCALE: As indicated DATE: 2026/03/24

PROJECT NO: 8369 DRAWING NO: A201 REVISION: A



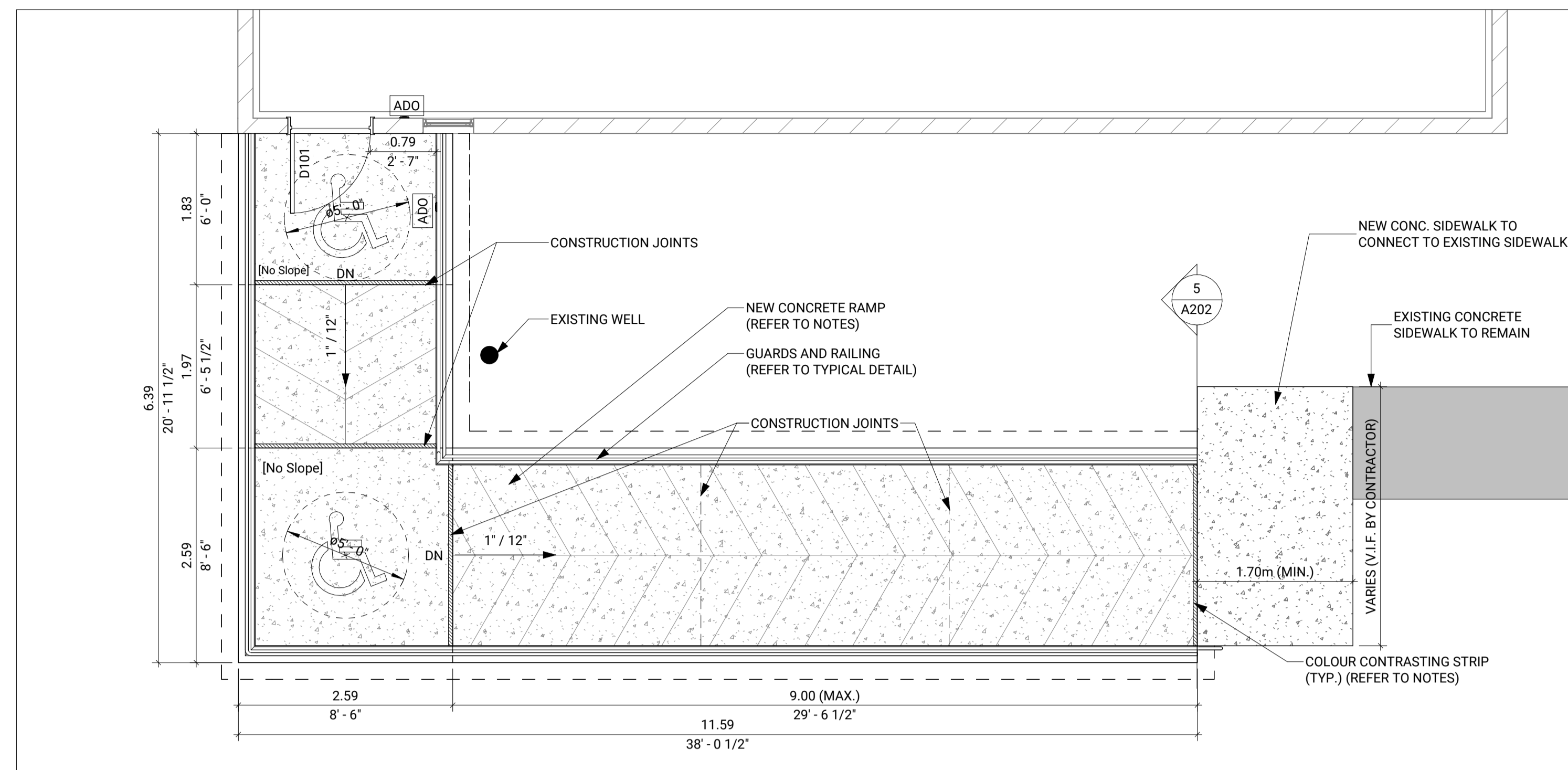
1 PROPOSED - KEY PLAN
1/8" = 1'-0"



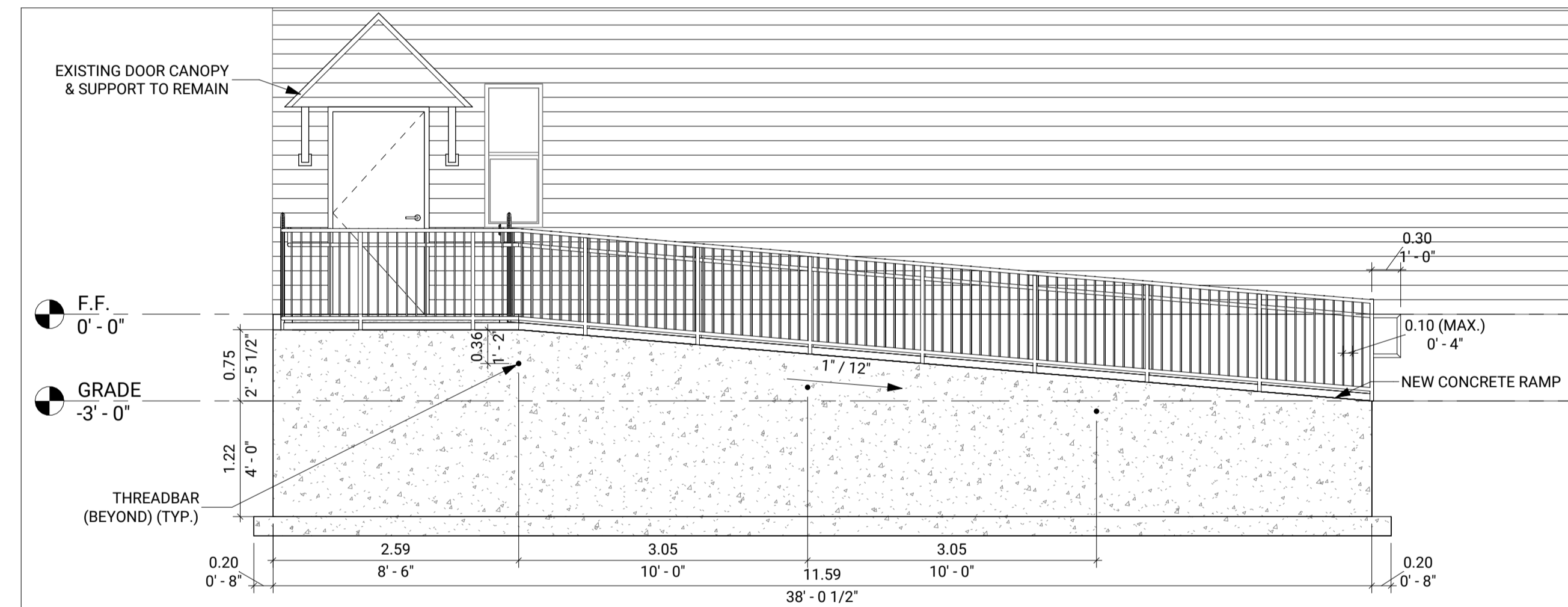
5 RAMP - TYPICAL SECTION
1" = 1'-0"

RAMP - GENERAL NOTES

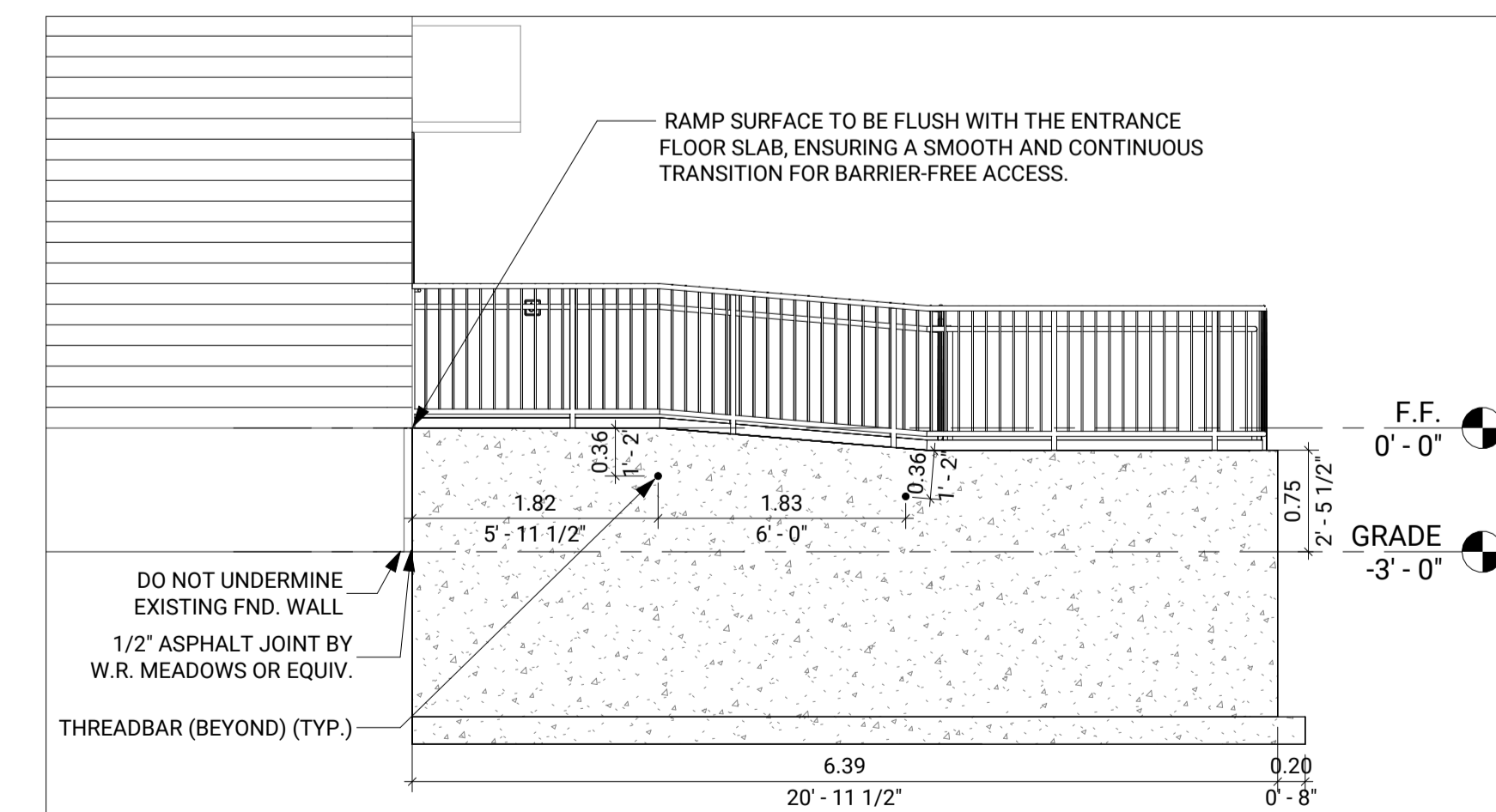
- ALL RAMP CONSTRUCTION SHALL COMPLY WITH THE ONTARIO BUILDING CODE (OBC) SECTION 3.8. AND THE ACCESSIBILITY FOR ONTARIANS WITH DISABILITIES ACT (AODA).
- MAXIMUM RAMP SLOPE SHALL BE 1:12.
- PROVIDE A MINIMUM CLEAR WIDTH OF 1000mm BETWEEN HANDRAILS.
- PROVIDE LEVEL LANDINGS OF AT LEAST 1700mm x 1700mm AT THE TOP AND BOTTOM OF THE RAMP, AT ANY CHANGE IN DIRECTION OF 90 DEGREES OR MORE, AND AT INTERVALS OF NOT MORE THAN 9m ALONG THE RAMP LENGTH.
- CONCRETE RAMP SURFACE SHALL BE FIRM, STABLE, AND SLIP-RESISTANT. PROVIDE A MEDIUM BROOM FINISH APPLIED PERPENDICULAR TO THE DIRECTION OF TRAVEL.
- PROVIDE A 50mm WIDE SLIP-RESISTANT, COLOR-CONTRASTED STRIP ALONG THE FULL WIDTH OF THE RAMP AT THE LEADING EDGE OF THE TOP AND BOTTOM LANDINGS.
- PROVIDE CONTINUOUS HANDRAILS ON BOTH SIDES OF THE RAMP MOUNTED BETWEEN 865mm (MIN.) AND 965mm (MAX.) ABOVE THE RAMP SURFACE.
- HANDRAILS SHALL HAVE A CIRCULAR CROSS-SECTION DIAMETER OF 30mm TO 40mm WITH A MINIMUM CLEARANCE OF 50mm FROM THE WALL OR GUARD.
- HANDRAILS SHALL EXTEND HORIZONTALLY AT LEAST 300mm BEYOND THE TOP AND BOTTOM OF THE RAMP SEGMENTS.
- PROVIDE GUARDS ON BOTH SIDES OF THE RAMP WITH A MINIMUM HEIGHT OF 1070mm.
- GUARDS SHALL BE DESIGNED SO THAT NO MEMBER OR ATTACHMENT BETWEEN 140mm AND 900mm ABOVE THE RAMP SURFACE WILL FACILITATE CLIMBING.
- GUARDS AND HANDRAILS SHALL CONFORM TO THE REQUIREMENTS OF THE OBC 2024.



2 PROPOSED - PLAN VIEW
1/4" = 1'-0"



3 PROPOSED - SOUTH ELEVATION
1/4" = 1'-0"



4 PROPOSED - WEST ELEVATION
1/4" = 1'-0"

USE AND INTERPRETATION OF DRAWINGS:

DRAWINGS ARE NOT TO BE SCALED.

UNAUTHORIZED CHANGES:

THIS DRAWING AND DESIGN IS COPYRIGHT PROTECTED WHICH SHALL NOT BE USED, REPRODUCED OR REVISED WITHOUT WRITTEN PERMISSION BY EFI.
THE CONTRACTOR SHALL CHECK AND VERIFY ALL DIMENSIONS. REPORT ALL ERRORS AND OMISSIONS PRIOR TO COMMENCING WORK.

NOT FOR CONSTRUCTION

TRUE NORTH PROJECT NORTH

DATE	NO.	DESCRIPTION	ISSUED BY
2026-03-25	A	ISSUED FOR CLIENT REVIEW	KT

DRAWN BY:	INITIALS:	YYYY/MM/DD
DESIGNED BY:	KT	2026/03/24
DRAWING CHECKED BY:	DM	2026/03/24
QC BY:	DM	2026/03/24
PM:	RS	2026/03/24

SEAL(S):

UNAUTHORIZED USE OF DATA DISCLOSURE OF TECHNICAL INFORMATION CONTAINED HEREIN OR REPRODUCTION OF THIS DOCUMENT IN WHOLE OR IN PART FOR USE BY THIRD PARTIES IS PROHIBITED WITHOUT PRIOR WRITTEN PERMISSION FROM EFI ENGINEERING INC.

EFI ENGINEERING
T: (613) 936-0148
engineer@efiengineering.com
www.efiengineering.com

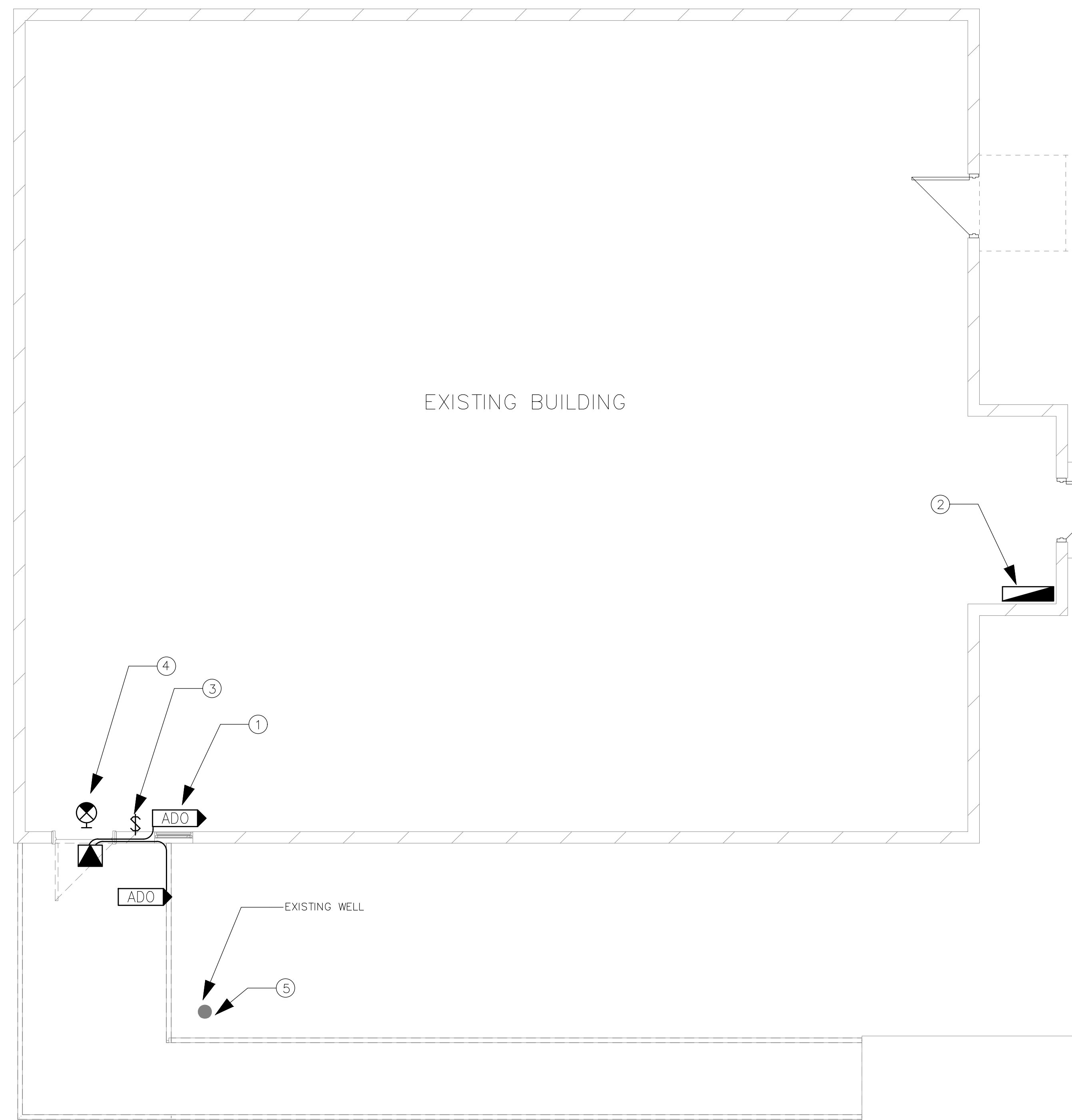
CLIENT: AUGUSTA TOWNSHIP
3560 COUNTY RD, PRESCOTT, ON, K0E 1T0

SITE: NORTH AUGUSTA COMMUNITY HALL
8115 MILL STREET, NORTH AUGUSTA, ON

TITLE: PROPOSED DETAILS

SCALE: As indicated DATE: 2026/03/24

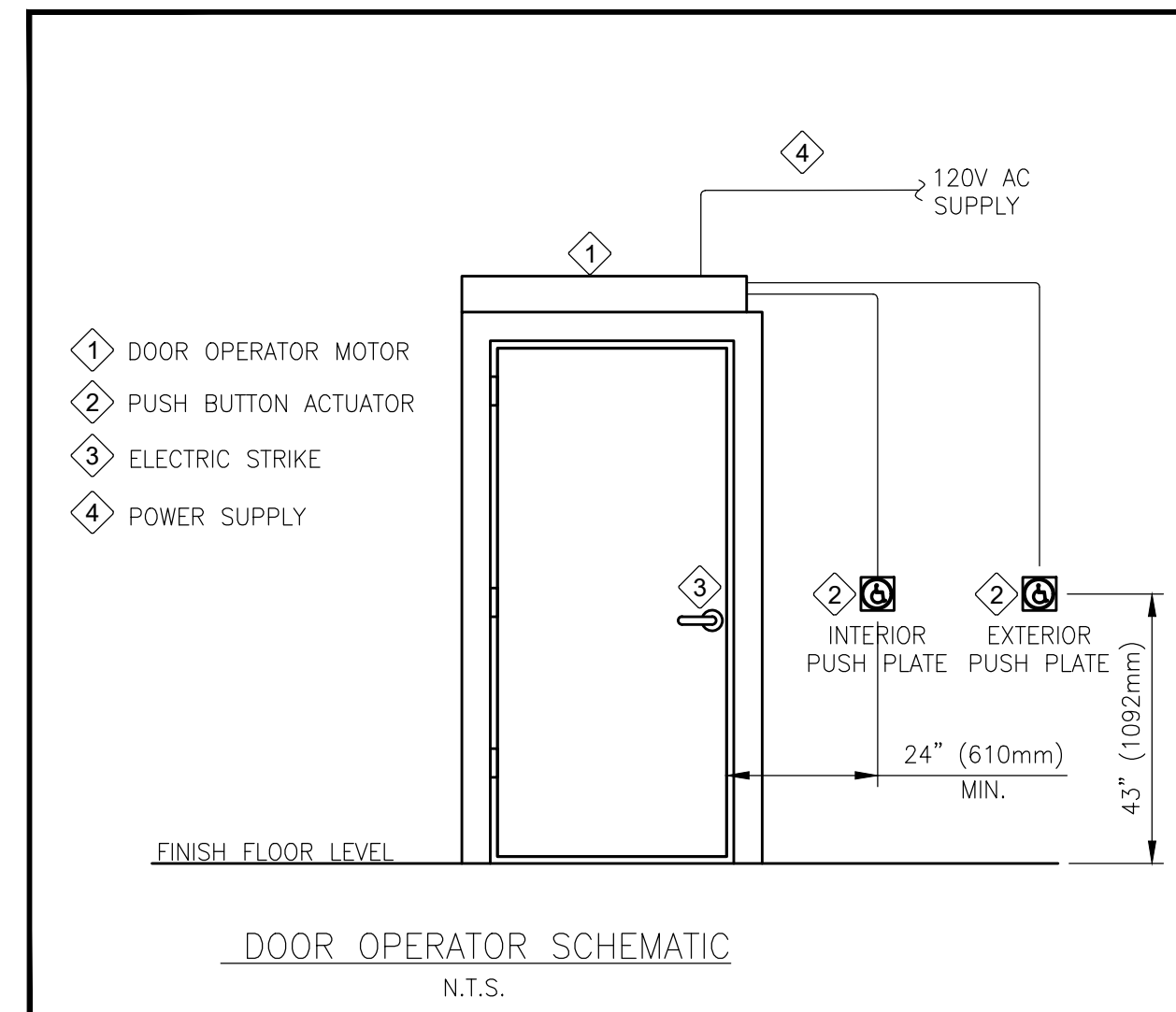
PROJECT NO: 8369 DRAWING NO: A202 REVISION: A



1 GROUND FLOOR PLAN
E100 1/4" = 1'-0"

ELECTRICAL DRAWING NOTES:

- 1 PROVIDE 15A 120V CONNECTION TO NEW DOOR OPERATOR AND REMOTE PUSH BUTTONS. CONCEAL WIRING IN WALLS AND CEILINGS. EXTERIOR PUSH BUTTON TO BE MOUNTED ON NEW RAILING AND INSTALLED IN TREADED RIGID CONDUIT WHERE EXPOSED.
- 2 PROVIDE 15A 1P BREAKER IN EXISTING 120/240V 1PH SQUARE D QOC PANEL FOR NEW DOOR OPERATOR. CONCEAL WIRING IN WALLS AND IN T-BAR CEILING SPACE.
- 3 RELOCATE EXISTING LIGHT SWITCH AND ANY WIRING ALONG DOOR FRAME AS REQUIRED TO ACCOMMODATE NEW DOOR WIDENING.
- 4 RELOCATE EXISTING EXIT SIGN AND WIRING AS REQUIRED TO ACCOMMODATE NEW DOOR OPENING. VERIFY EXISTING EMERGENCY LIGHTING POWER PACK FOR MINIMUM 30 MINUTES AND REPORT FINDINGS TO ENGINEER.
- 5 TRACE WELL ELECTRICAL CIRCUIT AND IDENTIFY TO GENERAL CONTRACTOR TO PROTECT DURING NEW RAMP INSTALLATION.



ELECTRICAL SPECIFICATIONS:

1. CONFORM WITH APPLICABLE REQUIREMENTS OF THE MINISTRY OF LABOUR, AND THE OCCUPATIONAL HEALTH AND SAFETY ACT AND REGULATIONS FOR CONSTRUCTION PROJECTS.
 2. DO COMPLETE INSTALLATION IN ACCORDANCE WITH THE FOLLOWING:
 - 2.1. ONTARIO ELECTRICAL SAFETY CODE (LATEST EDITION)
 - 2.2. ONTARIO BUILDING CODE(LATEST EDITION)
 - 2.3. ONTARIO FIRE CODE
 3. IF REQUIRED SUBMIT TO AUTHORITY HAVING JURISDICTION THE NECESSARY NUMBER OF DRAWINGS AND SPECIFICATIONS FOR APPROVAL PRIOR TO COMMENCEMENT OF WORK.
 4. PAY ALL ELECTRICAL PERMIT AND INSPECTION FEES.
 5. GROUND COMPLETE SYSTEM IN ACCORDANCE WITH THE ONTARIO ELECTRICAL SAFETY CODE AND ELECTRICAL SAFETY AUTHORITY.
 6. IDENTIFICATION AND LABELING:
 - 6.1. IDENTIFY ELECTRICAL EQUIPMENT IN ACCORDANCE WITH OWNER REQUIREMENTS REQUIREMENTS AND/OR INDUSTRY BEST PRACTICES.
 7. PROVIDE ONE (1) HARD COPY AND ONE (1) ELECTRONIC COPY OF COMPLETE OPERATING AND MAINTENANCE INSTRUCTIONS FOR EQUIPMENT FURNISHED UNDER THIS CONTRACT. INCLUDE THE FOLLOWING:
 - 7.1. OPERATING INSTRUCTIONS, INCLUDING START-UP AND SHUT-DOWN PROCEDURE.
 - 7.2. MANUFACTURERS' WARRANTIES AND GUARANTEES.
 8. CLEAN ALL ELECTRICAL SYSTEMS AT PROJECT COMPLETION.
 9. COMPLETE AS-BUILT DRAWINGS SHOWING ALL CHANGES AS WORK PROGRESSES.
- CONTRACTOR QUALIFICATIONS:**
10. INSTALLATION, ALTERATION, REPAIR, OR EXTENSION OF ANY ELECTRICAL EQUIPMENT SHALL BE DONE BY PERSONS WHO HOLD THE FOLLOWING CERTIFICATES OF QUALIFICATION (AS APPLICABLE):
ELECTRICIAN: CONSTRUCTION & MAINTENANCE.

EXISTING FACILITIES AND DEMOLITION:

11. LOCATE AND PROTECT ALL EXISTING EXTERIOR SERVICES
12. RETAIN AND PROTECT ALL EXISTING INTERIOR SERVICES AND BUILDING MATERIALS. FIX ANY AND ALL DAMAGE RESULTING FROM THIS WORK.

OUTLET BOXES:

13. GANG BOXES WHERE WIRING DEVICES ARE GROUPED. BLANK COVER PLATES FOR BOXES WITHOUT WIRING DEVICES.
14. EXTERIOR SURFACE BOXES TO BE CAST.

CONDUITS:

15. ELECTRICAL METALLIC TUBING (EMT), WITH WATER-TIGHT COUPLINGS, WHERE NOT SUBJECT TO MECHANICAL INJURY, IN SERVICE AREAS ONLY.

POWER WIRES AND CABLE:

16. VOLTAGE DROP:
 - 16.1. BRANCH CIRCUIT CONDUCTORS SHALL BE SIZED FOR A MAXIMUM VOLTAGE DROP OF 3% AT DESIGN LOAD.
17. BUILDING WIRES IN CONDUIT SYSTEMS TO BE STRANDED COPPER CONDUCTORS FOR 10 AWG AND LARGER, MINIMUM SIZE 12 AWG. TYPE RW90 FOR POWER.
18. BUILDING WIRES IN CONCEALED LOCATIONS TO BE COPPER, MINIMUM SIZE 12 AWG, TYPE AC90.
19. ALL WIRING SHALL BE CONCEALED IN WALLS AND CEILINGS, UNLESS OTHERWISE NOTED OR APPROVED.

ELECTRICAL LEGEND	
SYMBOL	DESCRIPTION
	DISTRIBUTION PANEL
	SINGLE POLE LIGHT SWITCH
	DUPLEX RECEPTACLE
	EMERGENCY LIGHT BATTERY PACK C/W TWO (2) HEADS AND CSA 5-15R
	EMERGENCY LIGHT REMOTE HEADS FED FROM BATTERY PACK
	EXIT LIGHT, SURFACE MOUNTED, SINGLE FACE
	POWER DOOR OPERATOR
	AUTOMATIC DOOR OPERATOR CONTROLS: 114MM SQUARE PUSH BUTTON WITH WHEELCHAIR SYMBOL CONFORMS TO OBC 3.8.3.3.(17)

EQUIPMENT SUPPORT:

20. ALL ELECTRICAL EQUIPMENT, CONDUIT, WIRING, LIGHTING, DEVICES, AND RELATED ITEMS SHALL BE SECURELY SUPPORTED, ATTACHED AND FASTENED TO BUILDING STRUCTURE.

COORDINATION:

21. INFORMATION INVOLVING ACCURATE DIMENSIONING OF THE BUILDING SHALL BE TAKEN FROM SITE BY CONTRACTOR.
22. DRAWINGS ARE IN DIAGRAMMATIC FORM, INTENDED TO CONVEY THE SCOPE OF WORK AND GENERAL ARRANGEMENT FOR EQUIPMENT. COORDINATE PHYSICAL LOCATION OF ALL EQUIPMENT WITH OTHER TRADES AND ALLOW FOR ANY ADDITIONAL CONDUIT, WIRING, FITTINGS, SUPPORTS, ETC., IN ORDER TO AVOID INTERFERENCE AND FACILITATE THE WORK.
23. CONTRACTOR TO MAKE ANY NECESSARY MODIFICATIONS OR ADDITIONS, WITHOUT CHARGE, TO ACCOMMODATE SITE CONDITIONS AND COORDINATION.
24. ELECTRICAL DRAWINGS SHALL BE READ IN CONJUNCTION WITH ALL OTHER DRAWINGS FOR THIS PROJECT.
25. ALL DEVICE AND OUTLET LOCATIONS SHALL BE CAREFULLY COORDINATED WITH THE GENERAL CONTRACTOR OR OWNER, TO ACCOMMODATE ALL FEATURES.

START-UP, COMMISSIONING AND TRAINING:

26. START-UP AND COMMISSION THE FOLLOWING SYSTEMS:
 - 26.1. LIGHTING AND CONTROLS
 - 26.2. DOOR OPERATOR
27. PERFORM SYSTEMATIC TESTS, PROCEDURES AND CHECKS ON SYSTEMS, AS FOLLOWS:
 - 27.1. TO VERIFY OPERATION IN ACCORDANCE WITH CONTRACT DOCUMENTS, DESIGN CRITERIA AND INTENT, AND MANUFACTURER'S REQUIREMENTS;
 - 27.2. TO ENSURE APPROPRIATE DOCUMENTATION IS PROVIDED;
28. PROVIDE WRITTEN REPORT AT END OF COMMISSIONING OUTLINING EQUIPMENT OPERATIONAL CONDITIONS AND PARAMETERS TO THE ENGINEER.

EMERGENCY LIGHTING:

45. ENSURE EMERGENCY LIGHTING POWER PACK CAN PROVIDE FULL LOAD POWER FOR 30 MIN.

USE AND INTERPRETATION OF DRAWINGS:

DRAWINGS ARE NOT TO BE SCALED.

UNAUTHORIZED CHANGES:

THIS DRAWING AND DESIGN IS COPYRIGHT PROTECTED WHICH SHALL NOT BE USED, REPRODUCED OR REVISED WITHOUT WRITTEN PERMISSION BY EFI. THE CONTRACTOR SHALL CHECK AND VERIFY ALL DIMENSIONS. REPORT ALL ERRORS AND OMISSIONS PRIOR TO COMMENCING WORK.

REFERENCES

NO. REF.	NO. DWG.	TITLE	BY
1	-	-	-
2	-	-	-

DATE	REV.	REVISIONS	BY	APP'D
26/03/27	B	RE-ISSUED FOR REVIEW	MT	WF
26/03/24	A	ISSUED FOR REVIEW	MT	WF

ISSUED STATUS: -

	INITIALS:	YYYY/MM/DD
DRAWN BY:	MT	2026/03/23
DESIGNED BY:	MT	2026/03/23
DRAWING CHECKED BY:	AB	2026/03/23
QC BY:	WF	2026/03/23
PM:	WF	2026/03/23

SEAL(S):

UNAUTHORIZED USE OF DATA, DISCLOSURE OF TECHNICAL INFORMATION CONTAINED HEREIN, OR REPRODUCTION OF THIS DOCUMENT IN WHOLE OR IN PART FOR USE BY THIRD PARTIES IS PROHIBITED WITHOUT PRIOR WRITTEN PERMISSION FROM EFI ENGINEERING INC.

EFI ENGINEERING T: (613) 936-0148
engineer@efiengineering.com
www.efiengineering.com

CLIENT: AUGUSTA TOWNSHIP
3560 COUNTY RD, PRESCOTT, ON, K0E 1T0

SITE: NORTH AUGUSTA COMMUNITY HALL
8115 MILL ST. NORTH AUGUSTA, ON

TITLE: ELECTRICAL GROUND FLOOR PLAN
NEW RAMP DOOR LAYOUT

SCALE: AS INDICATED DATE: 2026/03/23

PROJECT NO:	DRAWING NO:	REVISION:
8369	E100	B